



Installation Precautions for Solisstorage Energy Storage System

Ginlong Energy Storage Technologies Co., Ltd.

All Rights Reserved

Revision History

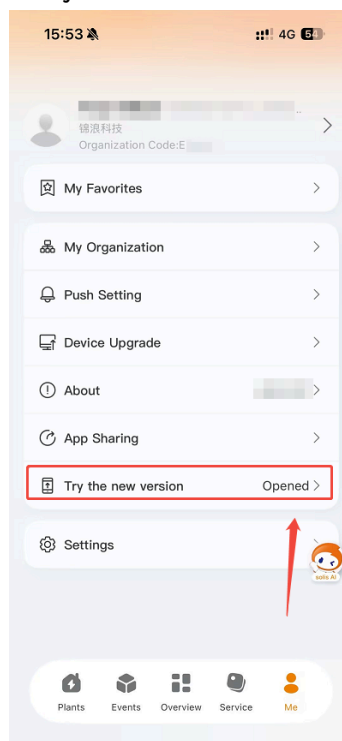
- Version 1.0-Jun. 15th, 2026: Initial release

1. Background

For Solis inverter products with production dates earlier than the specified date, in order to better adapt to the Solisstorage energy storage system and realize functions such as detailed battery information monitoring and battery OTA remote upgrade, please follow the following steps to perform the inverter upgrade operation.

2. Announcements

- Please ensure that the data logger connected to the inverter is of the following model.
 - S5-WiFi-ST
 - S2-WL-ST
 - S1-W4G-ST
- Please do not disconnect the Bluetooth connection of your mobile phone during the upgrade process, nor move your phone beyond the range where the device can detect it.
- Please do not disconnect the power supply of the inverter equipment during the upgrade process.
- Please keep the Soliscloud APP running on the home screen of your phone during the upgrade process, and ensure that your phone has sufficient battery power.
- Please make sure that the Soliscloud APP on your mobile device is version V5.2.221 or a later version, and then click. “Me -> Try the new version”



- If your APP version is too low, please scan the QR code below or search for "Soliscloud" in the app store to obtain the latest software version.



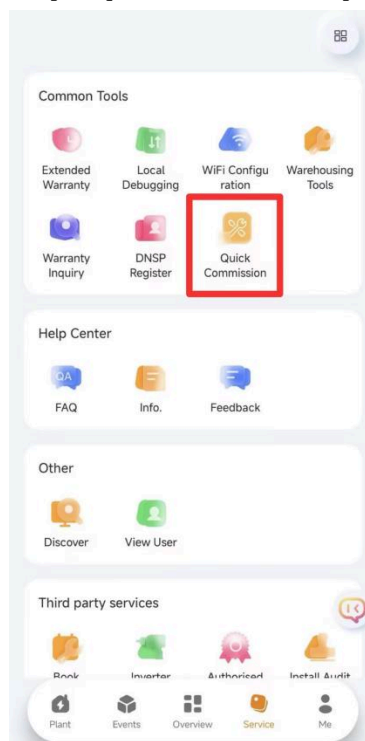
3. Operating Steps

Step 1: Follow the instructions for the inverter and battery in the packaging to complete the system wiring.

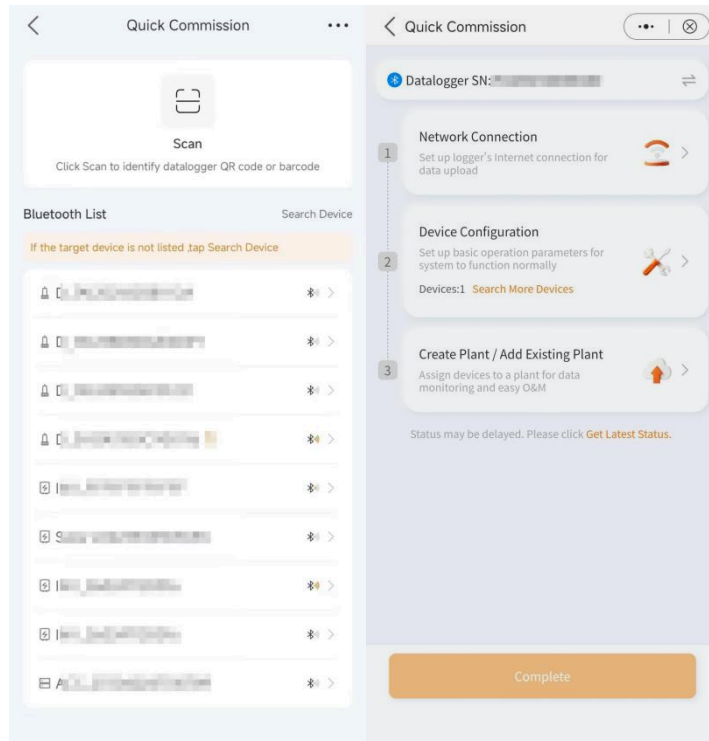
Step 2: Refer to the power-up steps in the battery manual. Open the battery circuit breaker and press the battery switch button. Wait for the inverter screen to light up.

Step 3: Turn on the Bluetooth switch of your mobile phone and open the Soliscloud APP. Then, enter the quick startup interface from the following path:

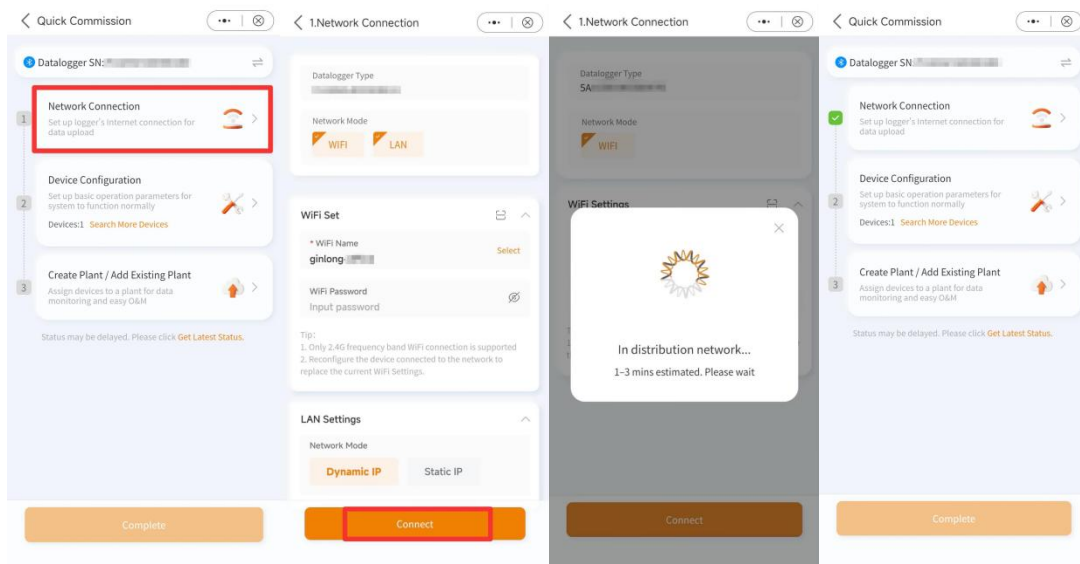
[Service] -> [Common Tools] -> [Quick Commission]



Step 4: Scan the QR code on the data acquisition device or select the Bluetooth signal corresponding to the data acquisition SN from the Bluetooth list and connect.



Step 5: Click on [Network Connection], and the system will automatically identify the data acquisition type and mode. Please follow the prompts to set the response settings and click [Connect] to complete the network connection.

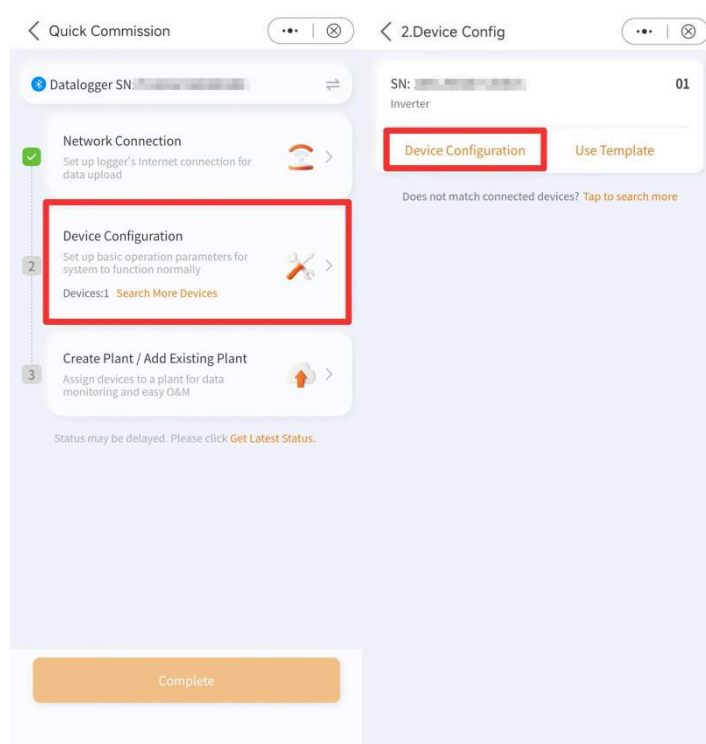


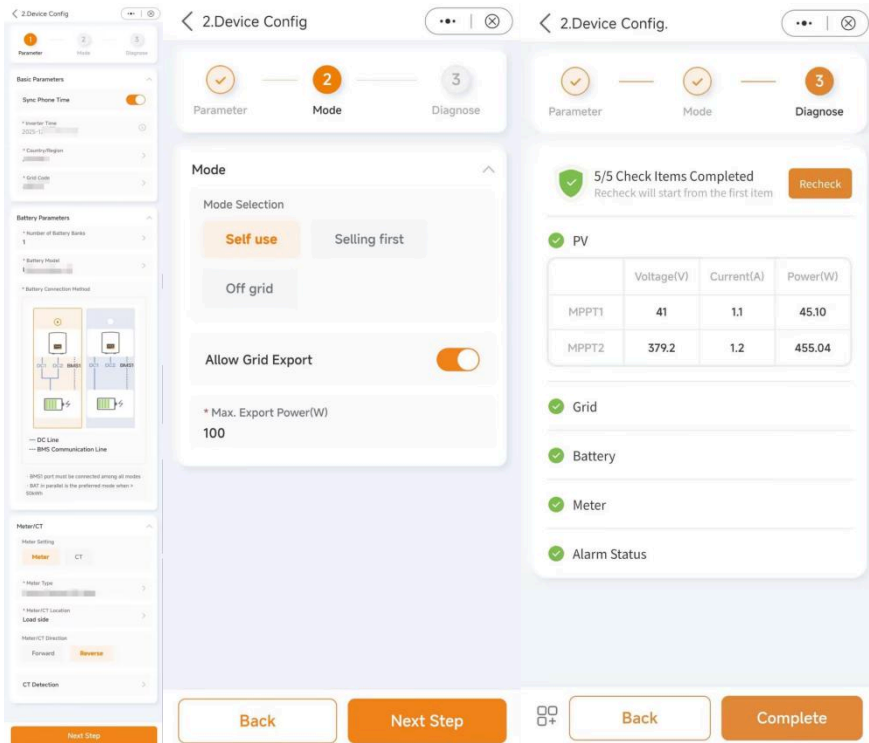
Note: When setting up WiFi, you can scan the WiFi QR code shared by others, or click [Select] to choose the WiFi network (on Android, this will open a drop-down list; on iOS, it will navigate to the system settings).

Step 6: Click on [Device Configuration]. This will display all the inverter devices connected in the data acquisition system. Please follow the screen instructions to complete the inverter settings and click [Next Step]. The system will automatically perform the installation diagnosis. (When using Solisstorage batteries, please select [Solisstorage] in the [Battery Model] setting item.)

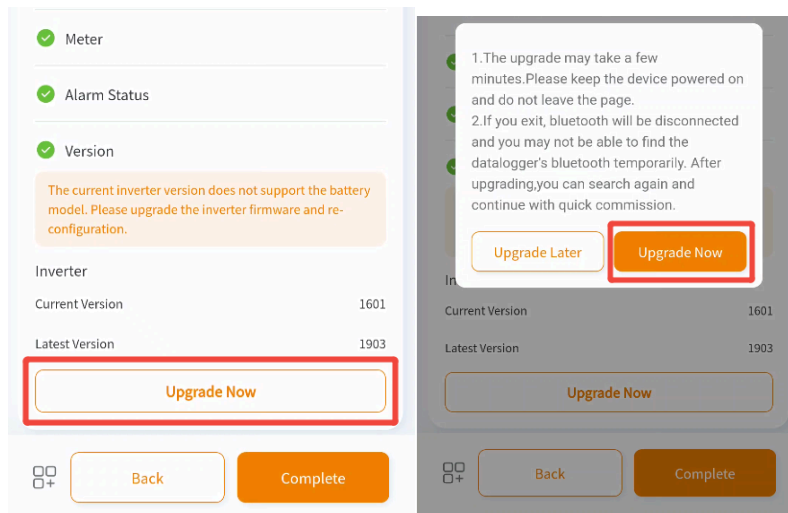
Note 1: The settings for inverters may vary slightly depending on the device model. Please refer to the actual interface to complete the settings.

Note 1: System diagnosis includes PV, Grid, Battery, Meter, and Alarm Status. If there are any abnormal issues such as battery communication problems, you can directly click [Complete] to skip this anomaly.

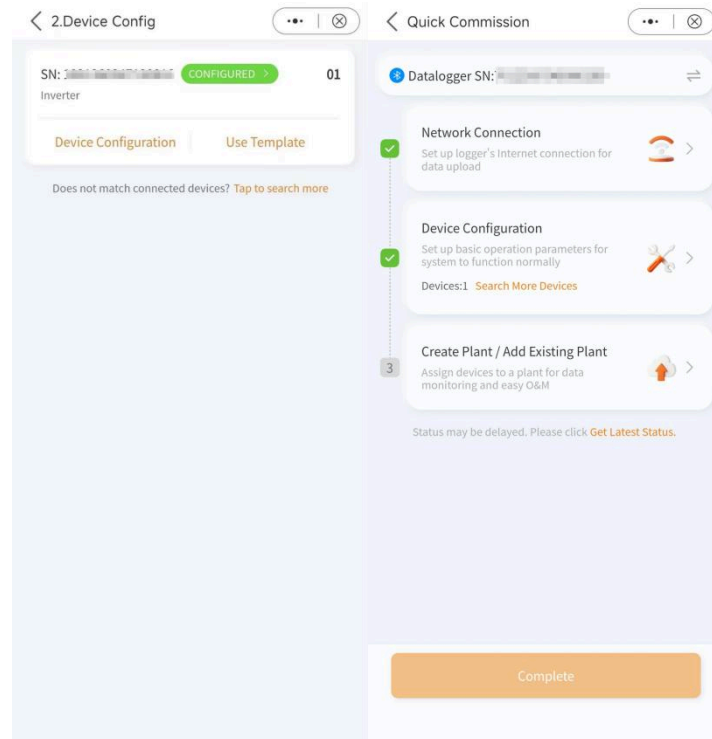




Step 7: If it is detected that the inverter firmware is not the latest version, click [Upgrade Now] to upgrade the inverter.



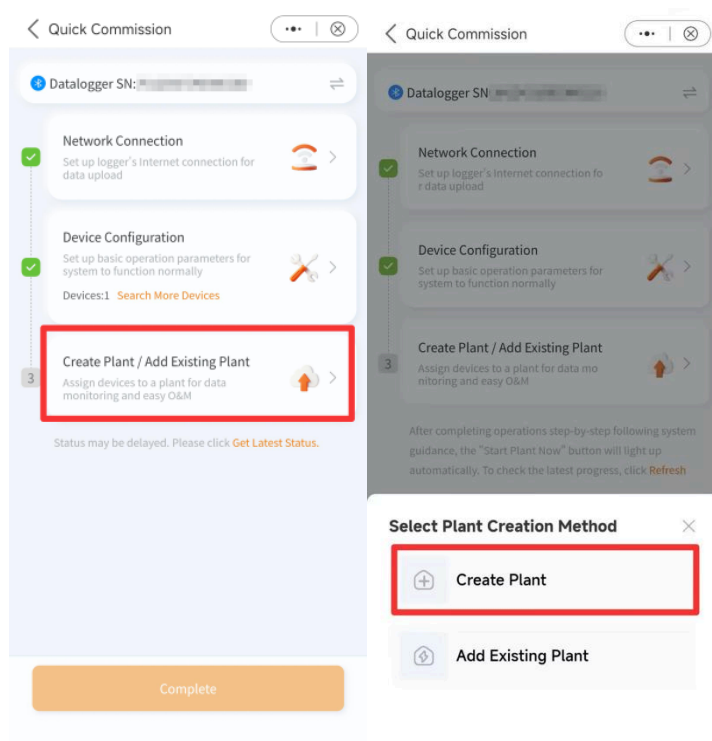
After the configuration is completed, the device will be marked as [CONFIGURED], and the "Device Configuration" step will be highlighted. You can click on [CONFIGURED] to directly jump to the local device details page

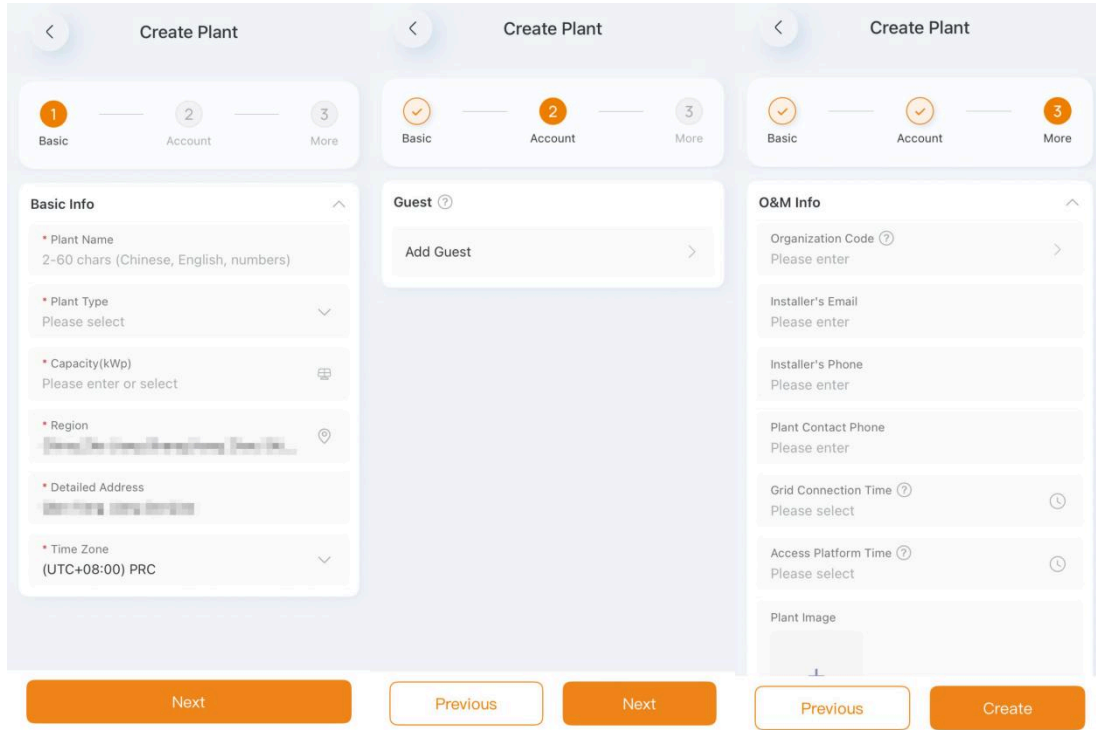


Step 8 :Create Plant/Add Existing Plant

Create Plant

If you want to bind the devices to a new plant, click [Create Plant]. Follow the instructions to fill in the relevant information and complete the plant creation.



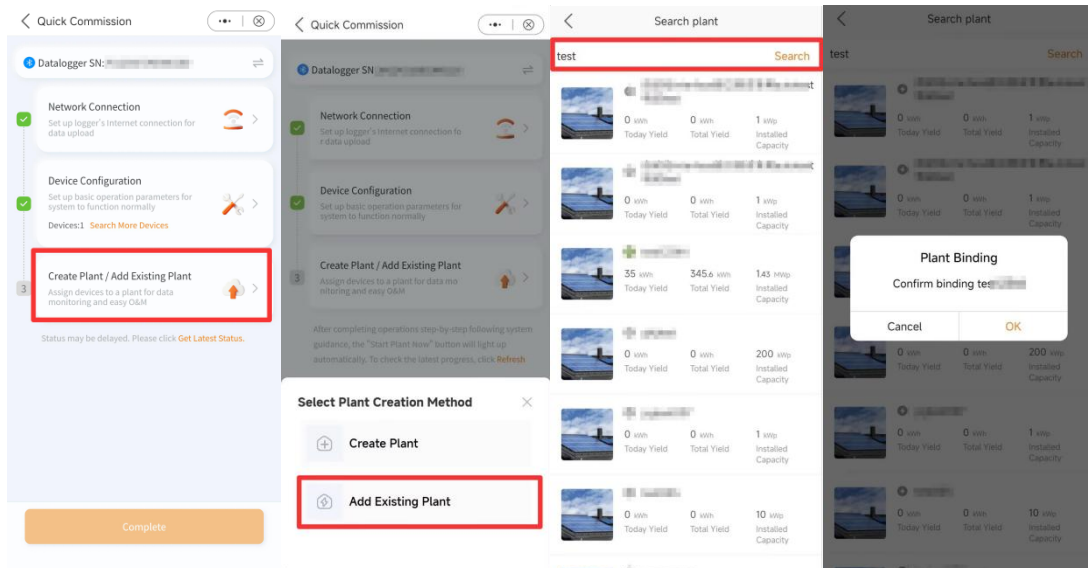


The image displays three sequential screenshots of the 'Create Plant' form, illustrating the progression through three steps:

- Step 1: Basic Info** - The progress indicator shows '1 Basic' selected. The form includes fields for: Plant Name (2-60 chars), Plant Type (dropdown), Capacity (kWp) (input), Region (location picker), Detailed Address (input), and Time Zone (dropdown, set to UTC+08:00 PRC). A 'Next' button is at the bottom.
- Step 2: Account/Guest** - The progress indicator shows '2 Account' selected. A 'Guest' section with an 'Add Guest' button is visible. 'Next' and 'Previous' buttons are at the bottom.
- Step 3: O&M Info** - The progress indicator shows '3 More' selected. The form includes: Organization Code, Installer's Email, Installer's Phone, Plant Contact Phone, Grid Connection Time (dropdown), Access Platform Time (dropdown), and a Plant Image upload area. 'Previous' and 'Create' buttons are at the bottom.

Add Existing Plant:

If you want to bind the devices to an existing plant, click [Add Existing Plant]. You can search and view all plants under your account. Select a plant and click [OK].



After completing the above steps, the Create Plant/Add Existing Plant step will be highlighted. Click [Complete] to enter the plant page and complete the commissioning.

